

Our Little Haven - St. Louis, MO ANNUAL REPORT



Mission Statement

Our Little Haven is relentlessly committed to providing early intervention services for children & families. Our community of professional caregivers creates a safe, secure and healing environment for those impacted by abuse, neglect and mental or behavioral health needs. We make the hurting stop, the healing begin and the love last, one family at a time.

Services Provided

Our Little Haven serves the young child impacted by abuse, neglect, and mental or behavioral health needs through a suite of programs all designed to offer and facilitate early intervention. We offer both physical and mental health treatment to children during their formative years, coupled with treatment and support services for the entire client family.

Specialized care includes:

- Keystone Mental Health Services is an outpatient mental health practice that assesses and treats mental and behavioral disorders. Keystone provides comprehensive psychological evaluations, assessments, psychotherapy and psychiatry by Licensed Psychologists, LCSW's, and a contract Psychiatrist.
- Our Little Academy Day Treatment is a full day year-round program that offers mental health treatment for children ages 3-5 who cannot participate in a traditional preschool/daycare due to social emotional or behavioral problems. Our team of master's level professionals provide individual and group psychotherapy a safe and structured environment with a 1-to-2 therapist-to-child ratio and support for parents or guardians.
- Community Family Services at the Taylor Family Care Center provides services for children and families in the foster care and adoption community. Community Family Services helps fill significant gaps in the child welfare system by meeting current needs.

SERVICE TOTALS:

Keystone Mental Health Services	Our Little Academy Day Treatment	Community Family Services at the Taylor Family Care Center
165 clients served	12 clients served	In 2024, we launched Community Family Services to fill critical gaps in the child welfare system. We developed Diligent Ongoing Relative Search and Accelerated Permanency Support, and maintained Coordination of Medical Services.
78% of clients experienced fewer emotional and/or behavioral symptoms after 12 sessions of psychotherapy, as evidenced by a score reduction of at least 1 point on an identified scale, completed at intake and quarterly during treatment.	100% Treatment goals met (100% of clients made progress toward completing 3 or more treatment goals every month).	In 2025 - -26 children were served through Diligent Ongoing Relative Search. -5 children were served through Accelerated Permanency Support. -17 children were served through Coordination of Medical Services.
98% of clients and/or their guardians reported having increased knowledge of presenting concern(s) and/or diagnoses, after completion of a psychological evaluation or assessment.	100% of clients demonstrated increase in functioning and decrease in overall symptoms as reported by families and therapists.	

Caring For Children and Families. Mind.Body.Soul. www.ourlittlehaven.org

Our Little Haven is a 501 c-3 non-profit organization.
P.O. Box 23010, Saint Louis, MO 63156-3010

Fed. I.D. # 43-1567500

2025

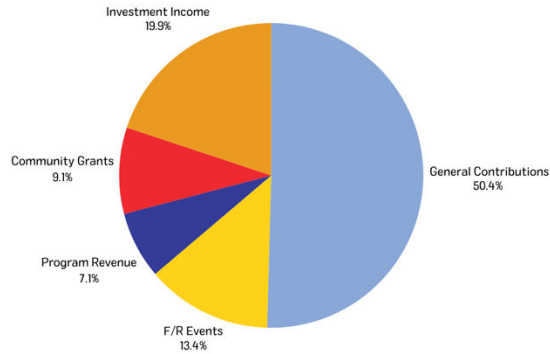
At A Glance

Our Little Haven - St. Louis, MO

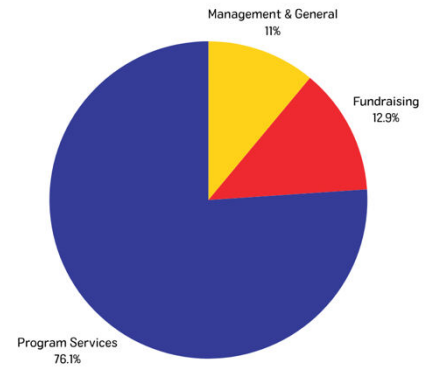
ANNUAL REPORT

Financial Report

Income %



Expense %



Revenue

General Contributions	\$1,253,816
Community Grants	\$227,442
Fundraising Events	\$332,464
Program Services	\$177,063
Investment Income	\$495,193

Total Revenue **\$2,485,978**

Expenses

Program Services	\$2,165,622
Management & General	\$314,231
Fundraising	\$367,114

Total Expenses **\$2,846,967**

Net Assets **\$19,311,016**

Board of Trustees

Denise Bahlinger
 Peter Barkofske
 Peter Baxendale
 Peter Berns
 Megan Brady
 Michael Brennan
 Ron Cameron
 Daniel Charles
 Katey Charles-Darpe
 Maleen Corrigan
 Joe Eppy
 Andrew Evola
 Steven Faust
 Benjamin Geis
 Lisa Goldkamp
 Robert & Anne Golterman
 Scott Goodman
 Kathleen Gunn

Glenn & Maureen Heitmann
 Mike Hotz
 Dixie Hummel
 Rick Heinrichs
 Sarah Hummel
 Adam Irace
 John Irace
 Mandy Kamykowski
 James & Anne Kelleher
 Margy Kemp
 Michael Kemp
 Amanda Klenov
 Pat Kloster
 Dale & Beth Kluba
 Paul Klug
 Mark Mager
 Robert & Denise Meyer
 Lori Moser

Bill & Chris Newbold
 David Nieters
 Tracey Ounanian
 Kelsey Renner
 Carol Schuchard
 Guy Slay
 Jim Souers
 Matt Stroble
 Dan Tarlas
 Scott Toman
 Donald Vietor
 Daniel Wagner
 Ray Wagner
 Will Withington
 Justin Welply
 Kent White
 Risa Zwerling-Wrighton
 Chad Young

